



Equipment for the Foodservice Industry
value + quality + service

X-LINE 67" Refrigerated Pizza Prep Table

Model No:
CPDR2-67VCX



CPDR2-67VCX

Features

Features:

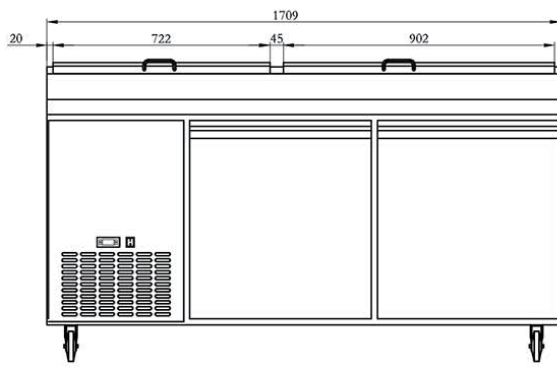
- Exterior & interior stainless steel construction
- Environmentally friendly R290 refrigerant
- Fits 9 (1/3-size) polycarbonate food pans in countertop prep area
- 19.5" full length cutting board included
- Heavy duty Embraco compressor
- Self-closing and stay open door
- Efficient refrigeration system
- Recessed door handle
- Magnetic door gaskets
- Casters for easy movement
- Pre-installed shelves

- Removable lid/top

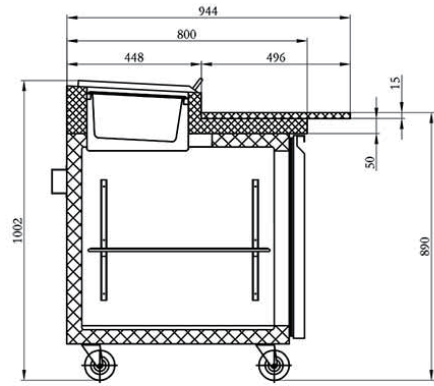
Warranty:

- Two year parts and labour; Five years on compressor. For full warranty details visit <https://www.efifoodequip.com/warranty-info.php>

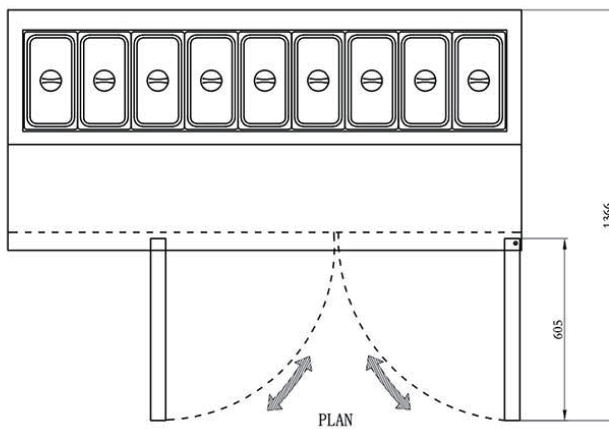


CPDR2-67VCX Specifications

ELEVATION



SECTION VIEW



PLAN

**Note: Overhang of cutting board not included in depth dimensions, with cutting board product depth is 944mm/37.2"*

Model	Refrigerant	Doors	Shelves	Dimension (mm) (inch)			HP	Voltage	Amps	Capacity (L) (Cu Ft.)	Net Weight (KG) (LBS)	Temperature Range
				L	D	H						
CPDR2-67VCX	R290	2	4	1709	800	1002	1/5	115/60	2.8	524	155	1 ~ 8°C
				67.0	31.5	39.4				18.5	342	33 ~ 45°F

Equipped with one NEMA 5-15P plug 

Shipping Information

Crate Dimensions (mm) (inch)			Net Weight (KG) (LBS)	Gross Weight (KG) (LBS)
L	D	H		
1856	930	1165	155	216
73.1	37.4	45.9	342	476

Specifications subject to change without notice.